



ESTABLISHED 1932

# P2,5 & 6

# Parents

# Engagement Day

16<sup>th</sup> February 2023  
2.30p.m. – 4.30p.m.



A Confident Person A Self-directed Learner A Compassionate Leader

# Agenda

Time	Item	Venue
2.30p.m.- 2.50p.m.	Welcome Address by Principal (Educational Landscape and School <u>New</u> Vision, Mission and Values)	Hall
2.50p.m.- 3.30p.m.	<ol style="list-style-type: none"><li>1. Holistic Curriculum@XNPS</li><li>2. 2ICC Programme@XNPS</li><li>3. Leaders Lead Leaders@XNPS</li><li>4. CCA@XNPS</li><li>5. Assessment@XNPS</li><li>6. DSA, SBB and Secondary School Education (*For P5 &amp; 6 only)</li></ol>	Hall
3.30p.m.- 4.30p.m.	Conversation with Form Teachers (Effective Home-School Partnership)	Respective classrooms



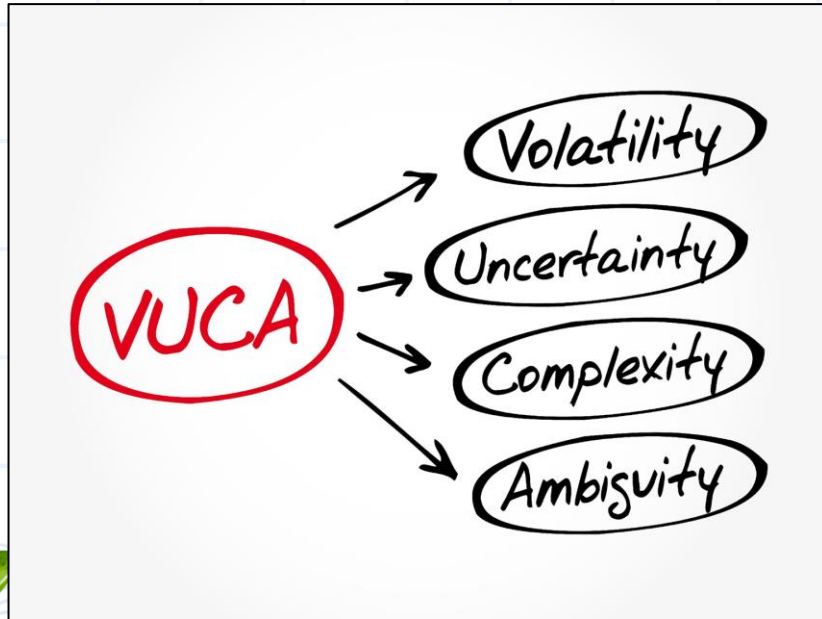
ESTABLISHED 1932

# Welcome Address by Principal

Mrs Cindy Ong

A Confident Person A Self-directed Learner A Compassionate Leader

# Preparing our students for the world




We want to develop  
our Xingnians to  
**future-ready**






**Our school has to  
change**



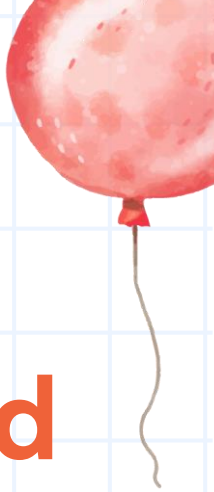
**We need to imagine  
the Future of Learning**



In 2023,

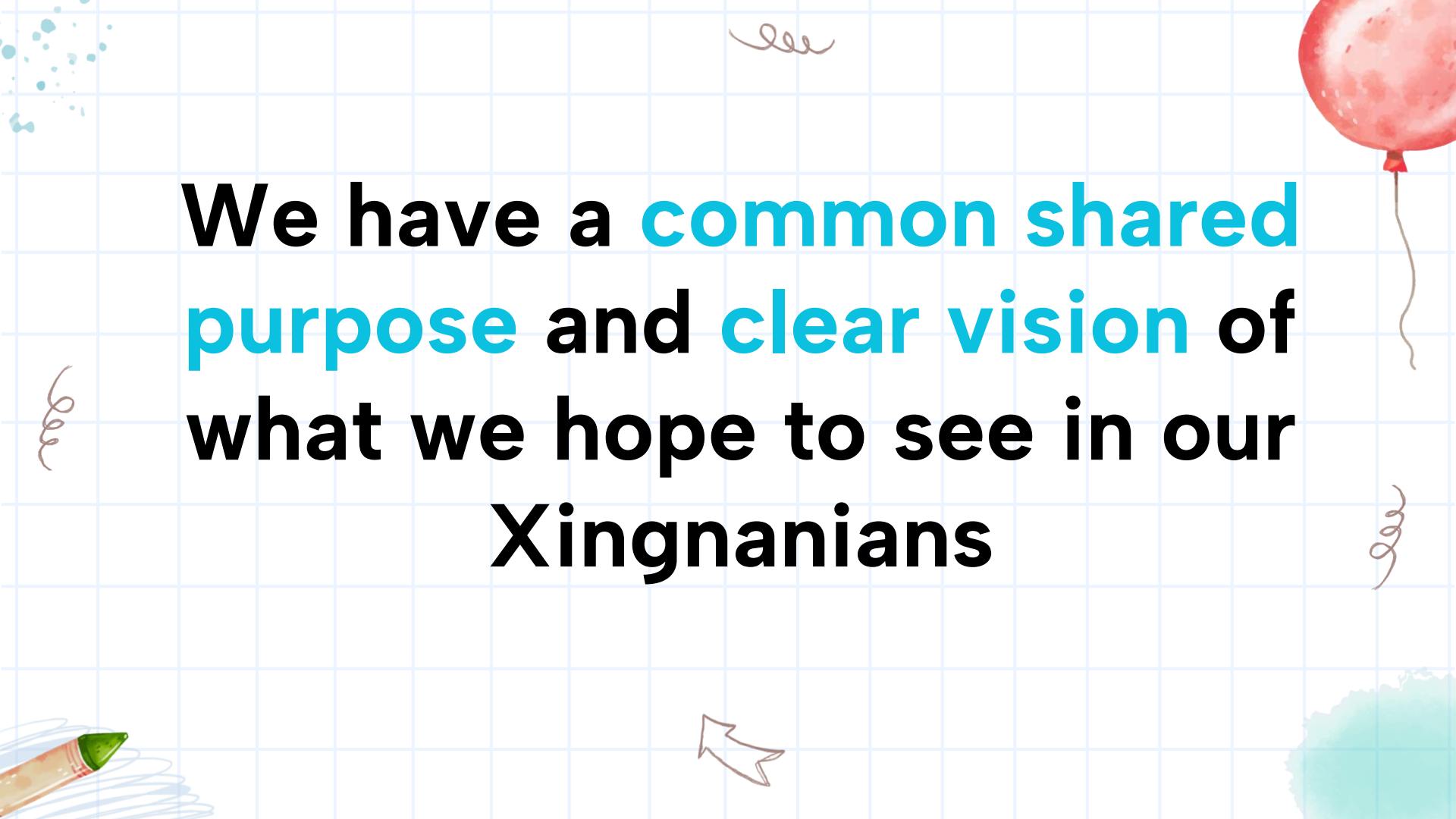


**We envisioned the skills and  
competencies our students  
would need when they enter  
the workforce**









We have a **common shared purpose** and **clear vision** of what we hope to see in our **Xingnanians**



**XINGNAN  
PRIMARY  
SCHOOL**

Has a zest for life.

Resilient and adaptable to  
embrace & overcome challenges.

Has a strong sense of  
right and wrong.

Discerning in  
judgment, think  
independently and  
critically, and  
communicate  
effectively.

**CONFIDENT  
PERSON**

Responsible for one's learning.

Committed, resourceful and  
reflective in the lifelong  
pursuit of learning.

**SELF-DIRECTED  
LEARNER**

**COMPASSIONATE  
LEADER**

Has a strong civic  
consciousness and  
sense of responsibility  
to one's family,  
community and nation.

Innovative, collaborative and  
take active roles to lead self  
and others in improving the  
lives of others.

**VISION**

INTEGRITY

EMPATHY

**R<sup>3</sup>**  
RESPONSIBILITY • RESPECT • RESILIENCE

**I**

**S**

**E**

**VALUES**



**MISSION**

To provide meaningful  
experiences that  
nurture minds and build  
character.

**PHILOSOPHY**

Every child is of worth  
and can learn.



# Confident Person





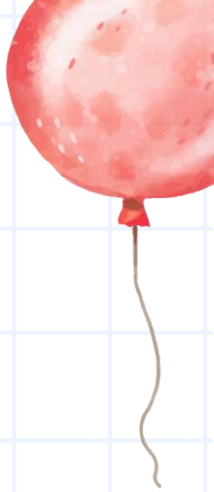
- Has a **zest for life**
- **Resilient and adaptable** to overcome challenges
- Has a **strong sense of right and wrong**
- **Discerning** in judgement, think independently and **critically**
- **Communicate** effectively







# Self-directed Learner

- **Responsible** for own learning
  - **Committed**
  - **Resourceful**
  - **Reflective**
  - **Pursue lifelong learning**
- 
- 



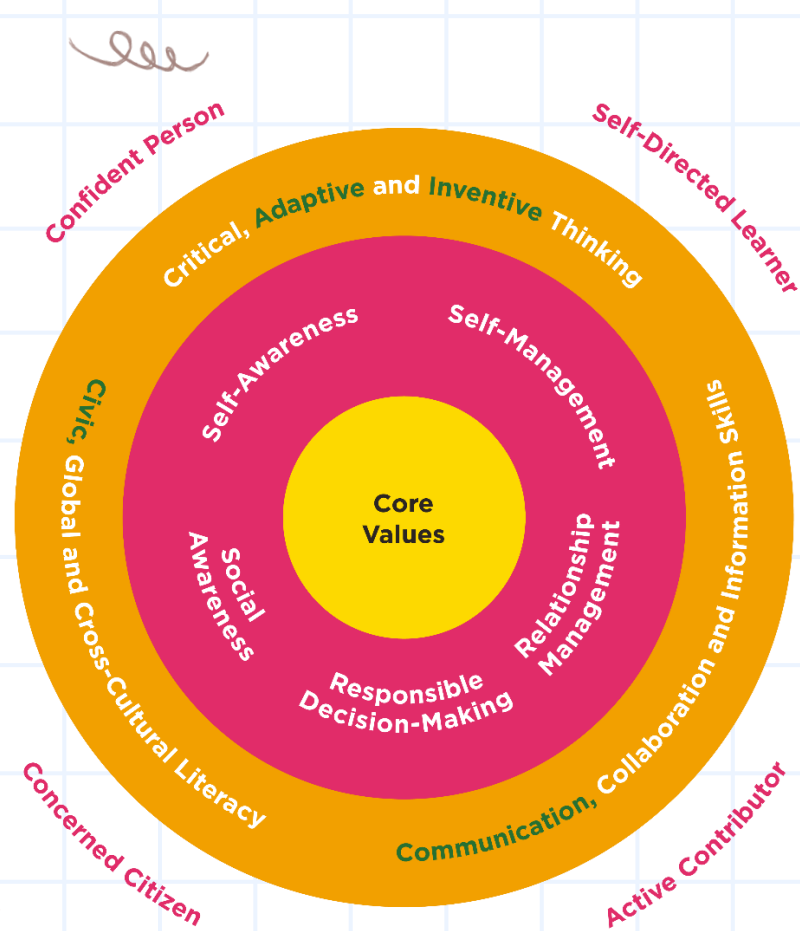


# Compassionate Leader

- 
- **Strong civic-consciousness**
  - **Sense of responsibility to family, community and nation**
  - **Innovative and collaborative**
  - **Actively lead self and others to improve the lives of others**
- 




# More intentional development of emerging 21st Century Competencies





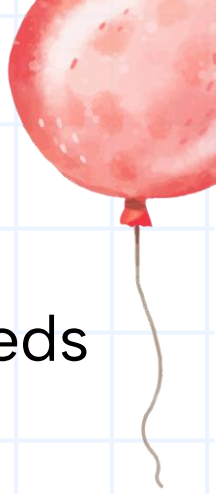
# Focus on:

- **Review and streamline** programmes for **coherence** (e.g. Eco-stewardship, VIA and IPW)
  - **Authentic and experiential learning experiences** (e.g. Penpal programme, real-life application)
  - Improve our **teaching & learning practices** (EdTech, student-centric assessment practices)
  - Professional **development** of staff
- 



# Some structural changes

- **After-school CCA & support programme**
  - Harness data to better cater to the learning needs of the students
  - Enhance well-being
  - Improve safety
- **Customisation of assembly programmes**
- **Connect Time before school (Tue, Wed, Thu)**
- **Combined recesses**

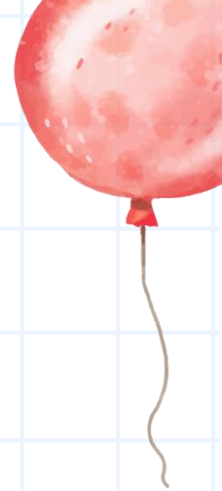




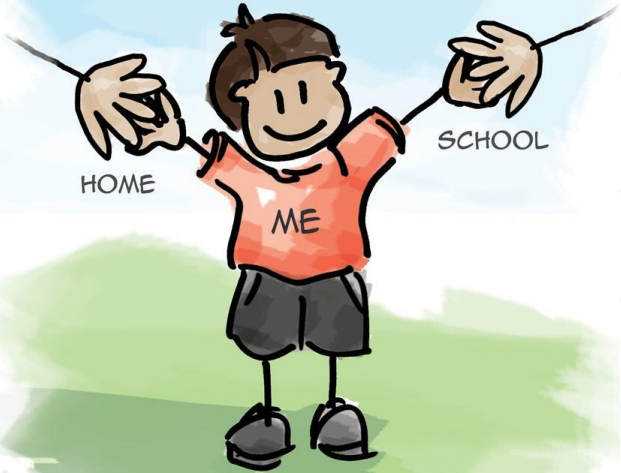


**No queue  
during the last  
12 mins of the  
P4 and P6  
recesses**





**BETTER  
TOGETHER**



HOME-SCHOOL PARTNERSHIP

Together, we will  
bring out the **best** in  
our Xingnansians

